

## GXH Series (Warranty of 5,000 hours at 105°C)

### Features

- The permissible ripple current, especially, in the high-temperature zone is improved through increase of heat resistance based on the improvement of etched form technology for high voltage and improvement of cathode foil, electrolyte paper, and electrolyte liquid.



### Product Specifications

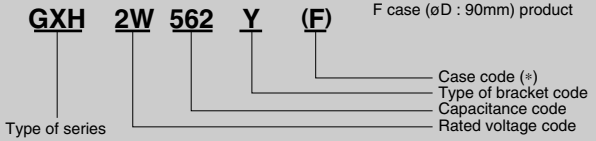
Items	Specifications
Temperature range	-40°C ~ +105°C
Capacitance tolerance	±20% (20°C, 120Hz)
Rated voltage	400, 450V.DC
Leakage current	0.01CV (µA) or 5mA, whichever is smaller or less [C = nominal capacitance (µF), V = rated voltage (V)]
Dissipation factor	Less than the value specified in the standard products table. (20°C, 120Hz)
Permissible ripple current	As specified in the standard products table. (105°C, 120Hz)
High-temperature load	After the rated voltage with specified ripple current is applied at 105°C for 5000 hours: Capacitance tolerance: ±15% or less of the initial value Dissipation factor: 175% or less of the specified initial value Leakage current: Specified initial value or less
Others	JIS C 5101-4.

### Ripple current correction coefficient

Temperature (°C)	60	85	105		
Correction coefficient	1.7	1.5	1.00		
Frequency (Hz)	50/60	120	300	1K	10K
Correction coefficient	0.7	1.0	1.1	1.3	1.4

Ripple current should be under 60 Arms at M5 terminal in accordance with from the permissible current.

Product code : (Example) GXH type 450V 5,600µF±20%  
F case (øD : 90mm) product



\*( ) Case code in parentheses : If two types of shape exist for the same rating, enter the first English letter of case code.

### Attachment of legs

- See page 43 for shapes and dimensions.
- Product names in the Standard Units Rating Table correspond to the attachment legs for Type Y (Type I for ø36 only), but Type I attachment legs may be used (Shape Code = I).
- If attachment legs are not necessary, enter "N" for the attachment leg shape code.
- Attachment legs will be delivered separately.

### Standard value and case size

Rated Voltage V. DC	Capacitance (µF)	Case size øDXL(mm)	Case code	tanδ 20°C, 120Hz	Ripple current (Arms) 105°C, 120Hz	Product name
400V(2G)	2700	64 · 115	D12R	0.15	12.8	GXH2G272Y
	3300	64 · 130	D13R	0.15	14.8	GXH2G332Y
	3900	64 · 155	D16R	0.15	17.1	GXH2G392YD
		77 · 115	E12R	0.15	16.6	GXH2G392YE
	4700	64 · 195	D20R	0.15	20.4	GXH2G472YD
		77 · 130	E13R	0.15	18.9	GXH2G472YE
	5600	77 · 155	E16R	0.15	21.8	GXH2G562Y
	6800	90 · 157	F16R	0.15	25.9	GXH2G682Y
	8200	90 · 171	F17R	0.15	29.2	GXH2G822Y
	10000	90 · 196	F20R	0.15	33.8	GXH2G103Y
12000	90 · 236	F24R	0.15	39.5	GXH2G123Y	

Rated Voltage V. DC	Capacitance (µF)	Case size øDXL(mm)	Case code	tanδ 20°C, 120Hz	Ripple current (Arms) 105°C, 120Hz	Product name
450V(2W)	2200	64 · 115	D12R	0.15	11.6	GXH2W222Y
		64 · 130	D13R	0.15	13.4	GXH2W272YD
	2700	77 · 115	E12R	0.15	13.8	GXH2W272YE
		64 · 155	D16R	0.15	15.7	GXH2W332YD
	3300	77 · 130	E13R	0.15	15.8	GXH2W332YE
		64 · 195	D20R	0.15	18.6	GXH2W392Y
	4700	77 · 155	E16R	0.15	20.0	GXH2W472Y
	5600	77 · 195	E20R	0.15	23.6	GXH2W562YE
		90 · 157	F16R	0.15	23.5	GXH2W562YF
	6800	90 · 196	F20R	0.15	27.8	GXH2W682Y
	8200	90 · 196	F20R	0.15	30.6	GXH2W822Y
	10000	90 · 236	F24R	0.15	36.1	GXH2W103Y