

FXR Series (Warranty of 5,000 hours at 85°C)

Features

- Ripple Current increased by 37% (without wind) or 50% (with 0.5m/s wind) by new heat radiation constructions in case of 90ø
- 500V added in the series.



Standard value and case size

Rated Voltage V. DC	Capacitance (μF)	Case size øDXL(mm)	Case code	tanδ 20°C,120Hz	Ripple current (Arms) 85°C,120Hz	Product name
350V(2V)	3900	64·115	D12T	0.15	14.6	FXR2V392Y
	4700	64·131	D13T	0.15	16.9	FXR2V472Y
	5600	64·155	D16T	0.15	19.8	FXR2V562YD
		77·121	E12T	0.15	21.6	FXR2V562YE
		90·106	F11T	0.15	22.3	FXR2V562YF
	6800	77·137	E13T	0.15	25.0	FXR2V682YE
		90·121	F12T	0.15	26.2	FXR2V682YF
	8200	77·161	E16T	0.15	29.3	FXR2V822YE
		90·137	F13T	0.15	30.1	FXR2V822YF
	10000	90·161	F16T	0.15	35.7	FXR2V103Y
	12000	90·161	F16T	0.15	39.1	FXR2V123Y

Rated Voltage V. DC	Capacitance (μF)	Case size øDXL(mm)	Case code	tanδ 20°C,120Hz	Ripple current (Arms) 85°C,120Hz	Product name
400V(2G)	2700	64·100	D10T	0.15	11.5	FXR2G272Y
	3300	64·131	D13T	0.15	14.2	FXR2G332Y
	3900	64·155	D16T	0.15	16.5	FXR2G392Y
	4700	64·155	D16T	0.15	18.1	FXR2G472YD
		77·137	E13T	0.15	20.8	FXR2G472YE
		90·106	F11T	0.15	20.5	FXR2G472YF
	5600	77·137	E13T	0.15	22.7	FXR2G562YE
		90·121	F12T	0.15	23.8	FXR2G562YF
	6800	77·161	E16T	0.15	26.6	FXR2G682YE
		90·137	F13T	0.15	27.4	FXR2G682YF
	8200	90·161	F16T	0.15	32.2	FXR2G822Y
	10000	90·161	F16T	0.15	35.7	FXR2G103Y

Rated Voltage V. DC	Capacitance (μF)	Case size øDXL(mm)	Case code	tanδ 20°C,120Hz	Ripple current (Arms) 85°C,120Hz	Product name
450V(2W)	2200	64·100	D10T	0.15	10.4	FXR2W222Y
	2700	64·131	D13T	0.15	12.8	FXR2W272Y
	3300	64·155	D16T	0.15	15.2	FXR2W332Y
	3900	64·155	D16T	0.15	16.5	FXR2W392YD
		77·121	E12T	0.15	18.0	FXR2W392YE
		90·106	F11T	0.15	18.6	FXR2W392YF
	4700	77·137	E13T	0.15	20.8	FXR2W472YE
		90·121	F12T	0.15	21.8	FXR2W472YF
	5600	77·161	E16T	0.15	24.2	FXR2W562YE
		90·137	F13T	0.15	24.9	FXR2W562YF
	6800	90·161	F16T	0.15	29.4	FXR2W682Y
	8200	90·161	F16T	0.15	32.2	FXR2W822Y
10000	90·178	F18T	0.15	36.9	FXR2W103Y	

Product Specifications

Items	Specifications
Temperature range	-40°C ~ +85°C
Capacitance tolerance	±20% (20°C, 120Hz)
Rated voltage	350 ~ 500V.DC
Leakage current	0.01CV (μA) or 5mA, whichever is smaller or less [C = nominal capacitance (μF), V = rated voltage (V)]
Dissipation factor	Less than the value specified in the standard products table. (20°C,120Hz)
Permissible ripple current	As specified in the standard products table. (85°C,120Hz)
High-temperature load	After the rated voltage with specified ripple current is applied at 85°C for 5000 hours: Capacitance tolerance: ±15% or less of the initial value Dissipation factor: 175% or less of the specified initial value Leakage current: Specified initial value or less
Others	JIS C 5101-4.

Ripple current correction coefficient

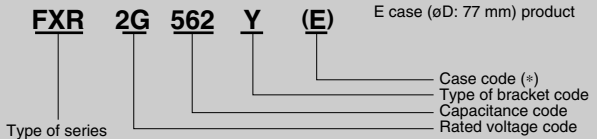
Temperature (°C)	40	60	85		
Correction coefficient	1.89	1.67	1.00		
Frequency (Hz)	50/60	120	300	1K	±10K
Correction coefficient	0.7	1.0	1.1	1.3	1.4
Forced wind (m/s)	< 0.5		0.5 ε		
Correction coefficient	1.0	1.1			

Terminal shapes: M5 for ø64; M6 for ø77, 90.

Terminal permissible currents: 60Arms for M5; 100Arms for M6.

Please use this type of capacitor at a terminal current below the permissible.

Product code : (Example) FXR type 400 V 5,600μF±20%
E case (øD: 77 mm) product



*() Case code in parentheses : If two types of shape exist for the same rating, enter the first English letter of case code.

Rated Voltage V. DC	Capacitance (μF)	Case size øDXL(mm)	Case code	tanδ 20°C,120Hz	Ripple current (Arms) 85°C,120Hz	Product name
500V(2H)	1500	64·115	D12T	0.15	8.6	FXR2H152Y
	1800	64·131	D13T	0.15	10.0	FXR2H182Y
	2200	64·155	D16T	0.15	11.7	FXR2H222Y
	2700	77·121	E12T	0.15	15.0	FXR2H272Y
		77·161	E16T	0.15	18.5	FXR2H332YE
		90·106	F11T	0.15	14.7	FXR2H332YF
	3300	77·161	E16T	0.15	20.2	FXR2H392YE
		90·121	F12T	0.15	19.0	FXR2H392YF
	4700	90·137	F13T	0.15	21.8	FXR2H472Y
	5600	90·161	F16T	0.15	25.3	FXR2H562Y
	6800	90·178	F18T	0.15	29.0	FXR2H682Y